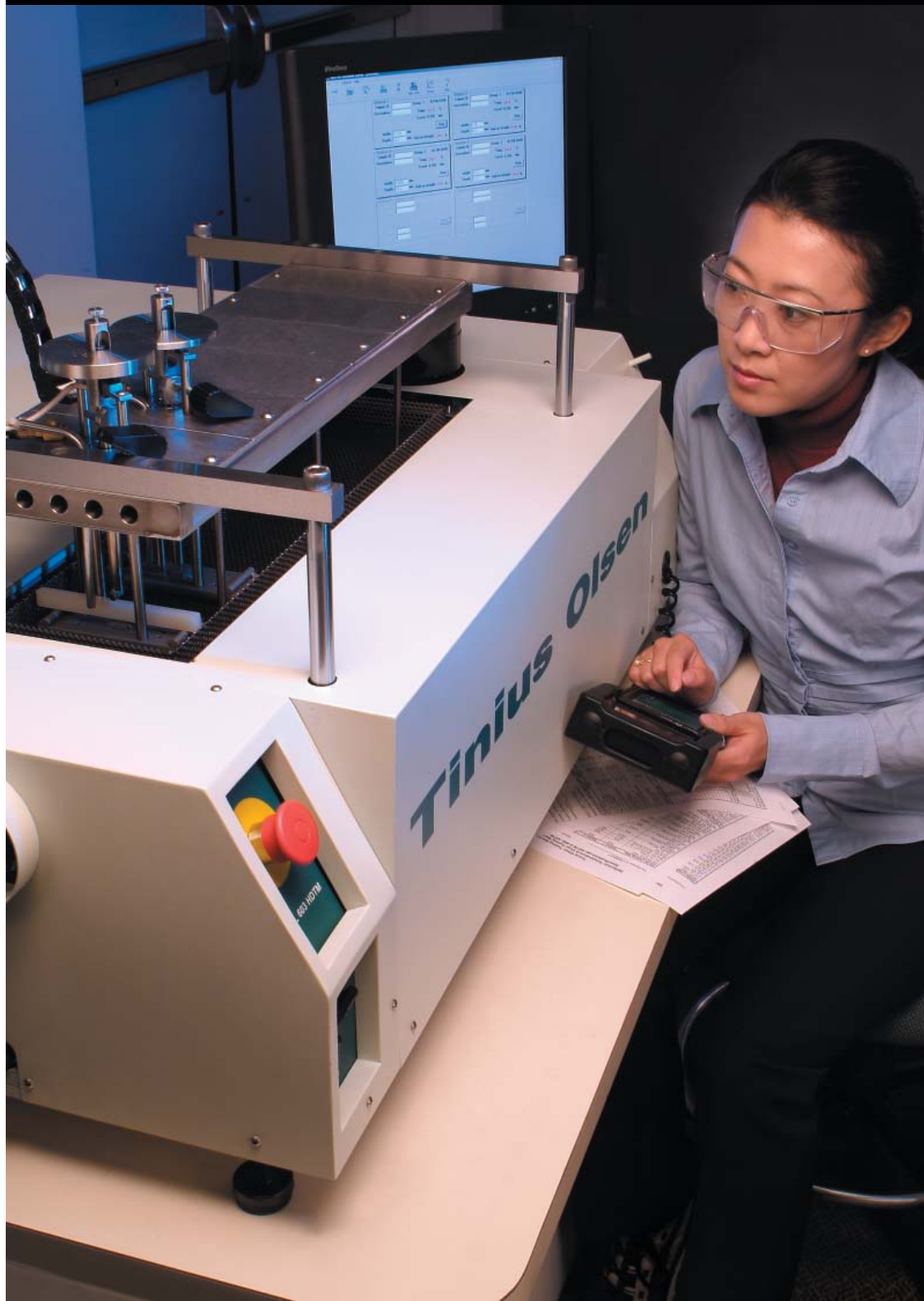




Deflection Temperature and Vicat Testers



Models 603 HDTM and 303 HDTM



Fig 1. Model 603 HDTM shown with two test stations, one for deflection temperature and one for Vicat testing. The stations are raised for easy and rapid specimen insertion prior to a test and for specimen removal at the end of the test.



Fig 2. Model 303 HDTM shown with three test stations, for deflection temperature and / or Vicat testing. Model here shown with three stations, gantry lowered, and optional cooling connections.

The Models 603 HDTM and 303 HDTM are the latest generation of Tinius Olsen's digitally controlled Automatic Deflection Temperature/Vicat test equipment, with an automated testing sequence that proceeds according to user defined control and configuration parameters.

The basic model 603 HDTM includes a six station bath, two test stations, and a handheld terminal. Up to four more stations can be added and each test frame can be configured with optional accessories for either Vicat or deflection temperature testing, including both 100 mm edgewise and 64 mm flatwise deflection temperature, as well as the four inch span test. Additionally, the 603 HDTM is ready to be linked to Tinius Olsen's HDV software so that the PC can configure the controller, collect the test data, generate a test report, and save the results.

The 303 HDTM shares these same features of the 603 HDTM, however it has only three stations available.

On both machines, all test stations are pneumatically raised from the bath at the touch of a button on the handheld terminal, allowing easy placement of the test specimens. Once the specimens are loaded into the respective test positions, all the stations are lowered collectively into the

oil bath by pneumatic pistons and the test can start.

The start can be initiated by either the handheld terminal or directly from a PC running Tinius Olsen's HDV software. Once started, the test is completely automatic and is performed according to the user defined program. Upon test completion, power to the heater is removed and the cooling cycle is initiated.

Test parameters are entered through the numeric keypad on the handheld terminal. Entries for each station include test type, deflection/penetration, span, specimen dimensions, and stress or force. Starting temperature, soak time, maximum temperature and rate of temperature rise are also entered for control of the bath unit. These configurations are stored and may be used for future tests.

The 603 HDTM has a built-in heat exchanger so that once the test is complete a rapid cooldown is automatically initiated. Using regular mains water, the temperature of the silicon oil can be reduced from a maximum of 300°C to 20° above the water inlet temperature in approximately 20 minutes. The 303 HDTM, on the other hand, has an optional cooling system

Once the cooling cycle is complete, all the test stations can be collectively



Fig 3. Close-up of test station, which is configured for a heat deflection test.

raised allowing easy removal of the tested samples. In the event that a specimen is dislodged from the station during the course of the test, it will be safely caught in the specimen basket, keeping the oil bath as clean as possible.

The handheld terminal also shows a continuous display of temperature and deflection/penetration for each station throughout the test.

Key Features

- Conforms to ISO 75, ISO 306, ASTM D648, and ASTM D1525
- Fully automatic control of entire test cycle
- Bath has port with an exhaust fan to remove interior oil fumes
- Air bearing-guided loading rods for virtually friction-free load application
- Electronic transducers integrated into the loading rod assemblies for 0.001 mm (0.0001 in) resolution of deflection or penetration
- Loading nose and rod assemblies provide 76 grams nominal load for ISO 75 'flatwise' deflection temperature tests on 4 mm x 10 mm specimens at 0.45 Mpa stress
- Built-in heat exchanger for rapid system cooldown (optional on Model 303 HDTM)
- Pneumatic station lift for easy specimen insertion and removal
- Automatic correction for thermal expansion of test frames
- Built-in specimen basket to catch any dislodged specimens
- Accessories available include additional test stations, deflection temperature loading noses, Vicat loading noses and needles, weights, 64 mm span supports for 'flatwise' deflection temperature testing (the stations are predrilled to accept these supports)

Technical Specifications

MODEL		603	303
NUMBER OF STATIONS		6	3
TEMPERATURE RANGE	°C	23 ⁰ to 300 ⁰	
TEMPERATURE RAMP	°C	50 ⁰ per hour or 2 ⁰ per minute	
TEMPERATURE DISPLAY RESOLUTION	°C	0.1	
TEMPERATURE SENSOR		Platinum RTD located adjacent to the load application point at each station	
DEFLECTION / PENETRATION MEASUREMENT		LVDT	
DEFLECTION / PENETRATION DISPLAY RESOLUTION	mm	0.001	
COOLDOWN RATE **		Maximum of 20 ⁰ above cooling water temperature in 20 minutes.	
TEMPERATURE SAFETY LIMIT		Independent dual systems using thermostatic switch in bath and keypad selectable software limiting	
DIMENSIONS (wxdxh)	mm	969 x 769 x 572	826 x 639 x 585
	in	38.5 x 30.5 x 22.5	32.5 x 25.5 x 23
WEIGHT	kg	132	87
	lb	290	190
REQUIRED UTILITIES	Heat Transfer Medium	16 liters (3.7 US gallons) min	11 liters (2.9 US gallons)
	Water	Water supply for cooldown	
	Clean Air	Dry air filtered to 50 microns at 40psi (2.7 bar) min	
	Power	220 +/- 10%, 50/60 Hz, 1 phase, 4.5 kW	

**** Note - Cooling is an option on the Model 303, but standard on the Model 603**

Operating Environment:

Environmental Temperature Range: 60 to 100°F (15 to 38°C)

Storage Temperature Range: 14 to 115°F (-10 to 45°C)

Humidity Range: 10% to 90% non-condensing, wet bulb method

Power: standard optional voltages 220/240 VAC, 50 – 60 Hz; power must be free of spikes and surges exceeding 10% of the nominal voltage

Notes: All models conform to all relevant European CE Health and Safety Directives.

Specifications subject to change without notice.



Fig 4.
Close-up of
a test station
showing
the Vicat
configuration.

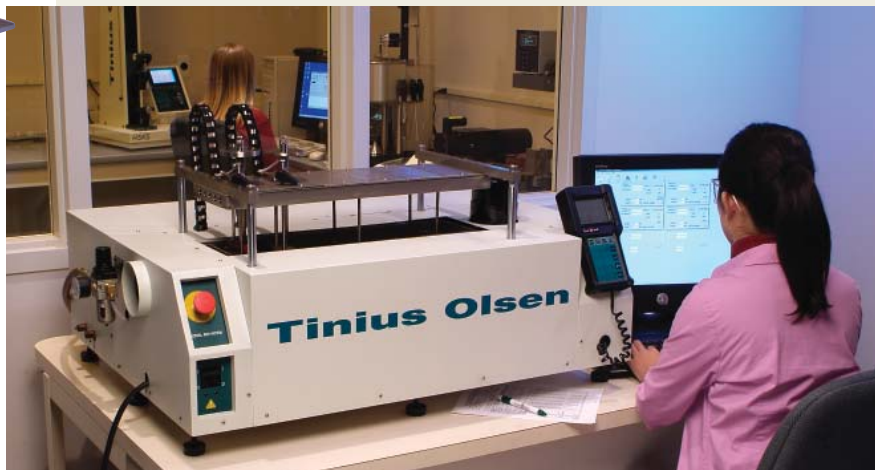
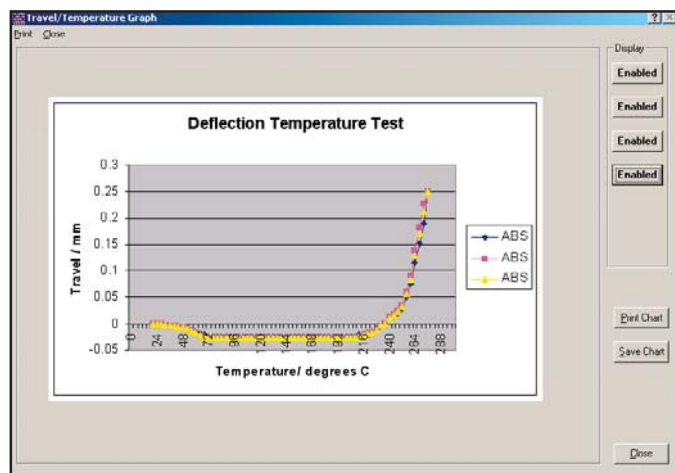
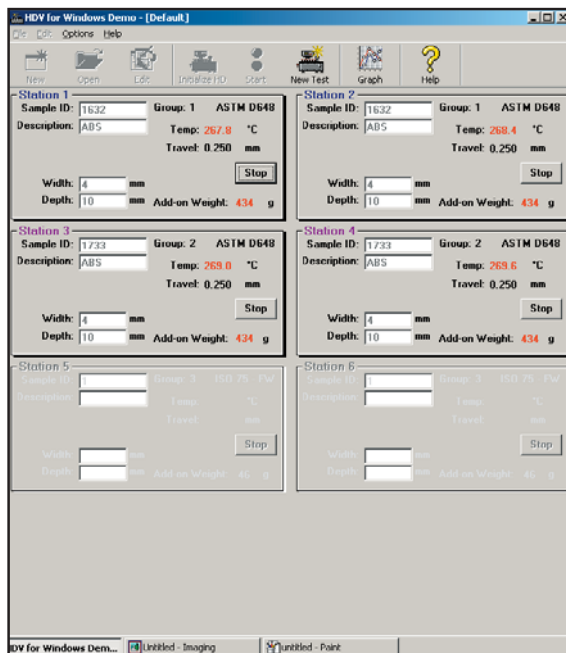


Fig 5. Model 603 HDTM can be controlled by a PC.

HDV Software

- For easy testing control and data storage using a PC.
- User selected reporting and exporting formats including report generation in HTML format.
- Built-in SPC programs for X bar, R, and frequency distribution charts and histograms.
- Produces temperature vs penetration (or deflection) for individual stations in real time.
- Test mode allows configuring, running, and saving of tests and results.
- Recall mode permits viewing of previously saved results and performs database maintenance.
- Demo mode simplifies operator training.
- Two levels of password protection.



1065 Easton Road
Horsham, PA 19044 USA
(215) 675-7100
Fax (215) 441-0899

6 Perrywood Business Park
Honeycrook Lane, Salfords
Redhill, Surrey RH1 5DZ England
+44 (0) 1737 765001
Fax +44 (0) 1737 764768

www.TiniusOlsen.com
info@TiniusOlsen.com

Contact Your Local Representative: