



The Constant Load Pounding Machine is used for the determination of loss in thickness and loss in hardness of flexible cellular materials intended for use in upholstery.

This test provides a means of assessing the service performance of flexible cellular materials of the latex and polyurethane types used in load-bearing upholstery. The test can be performed on both standard size test pieces cut from stock material and to shaped components.

The principle of the test is repeated indentation of a test piece by the indenter, smaller in area than the test piece, the maximum load reached during each cycle being 750N, and running the machine for 80,000 continuous load cycles.

A pneumatic cylinder is mounted inside the machine, raising the base platen to pound against the circular indenter. A set of weights are fixed on top of the indenter to give a repetitive load against the sample. For added safety, the sample area is fully enclosed, with limit switches put in place so all operation is ceased if the door is opened, ensuring no harm come to operators.



Applications:

- Foam
- Seating
- Polyurethane

Features:

- 2 x 20 Kg Weights
- 1 x 10 Kg Weights
- 2 x 5 Kg Weights
- Up / Down Indicator
- Counter
- Regulators
- Start / Stop
- Timer
- Emergency Stop Switch

Specifications:

- Plane Platen
- Indenter, diameter: 250 +/- 1mm 25 +/- 1 mm radius
- Maximum force of 750 +/- 20 N
- Adjustable Stroke
- Speed: 70cpm setting - 70 +/- 5 cpm
10cpm setting - 10 +/-1 cpm



Standards:

- AS 2282.12
- ASTM D3574
- ISO 3385
- BS EN ISO 3385
- DIN EN ISO 3385
- EN ISO 3385
- JIS K 6400

Connections:

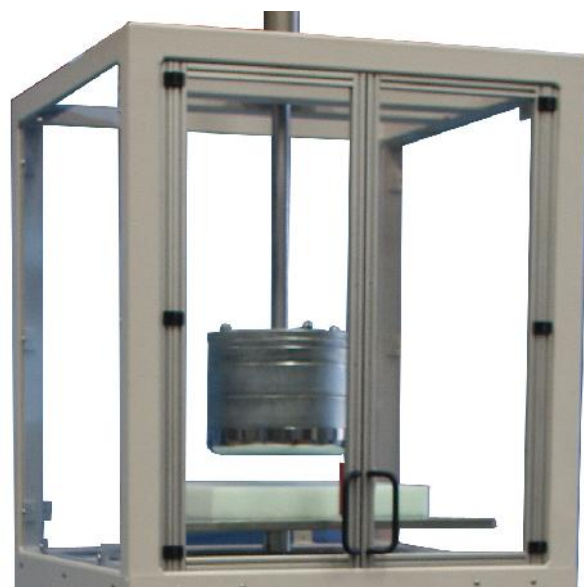
- **Air:** 600kpa - 800kpa
Air volume sufficient to operate for an extended period of time
- **Electrical:** 220/240 VAC @ 50 HZ or
110 VAC @ 60 HZ
(please specify when ordering)

Dimensions:

- **H:** 2,400mm
- **W:** 900mm
- **D:** 750mm
- **Weight:** 160kg

Benefits:

- Easy to use
- Fast results
- Accurate



Indenter with weights, Test Sample
and Plane Platen



Control Panel